

**Pedestrian pallet stacker
with ride on option**

The PF10 is a pedestrian forklift stacker with ride on option. Rated load capacity is 1000kg. The max lifting height is 3500mm. This machine is small and cost effective, perfect for use over flat ground, second floors and containers.

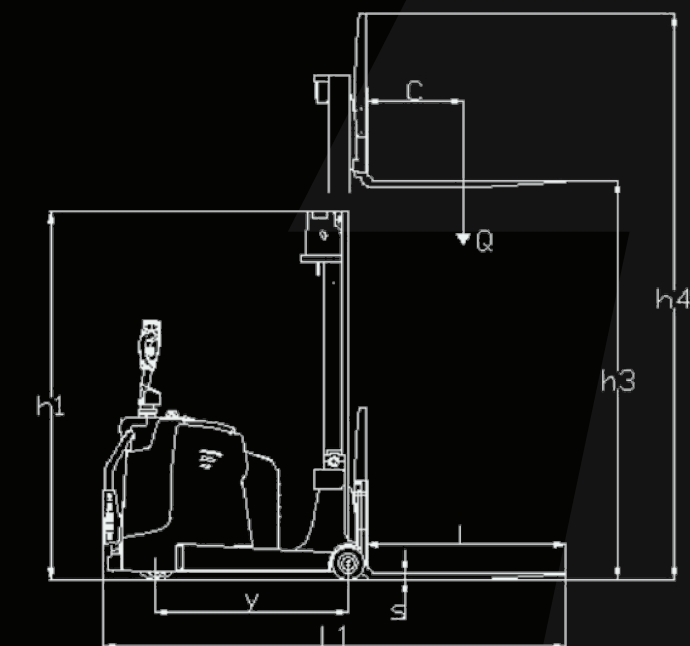
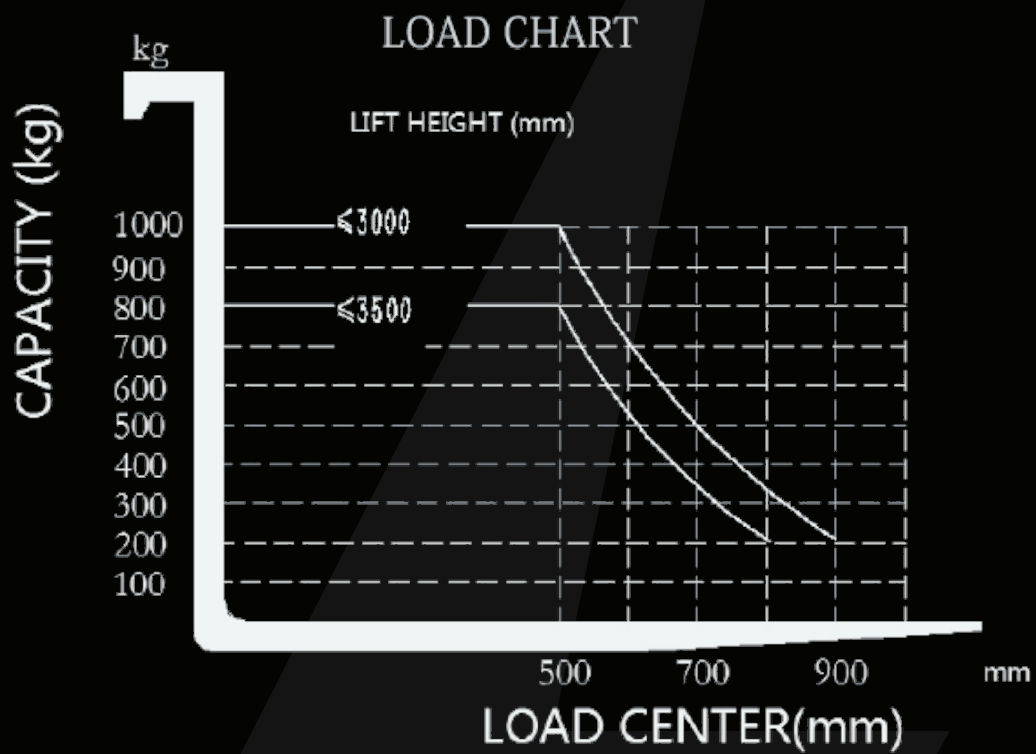
- Uses 30% less energy than a typical forklift
- Water and dust resistance enables outdoor use.
- Works with all pallet types.



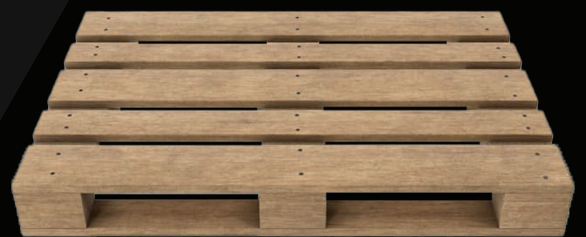
PF10 Product Specification

Standard					
1.1	Brand		Kelvin	Kelvin	Kelvin
1.2	Model		PF10 1.6m lift height	PF10 2.5m lift height	PF10 3m lift height
1.3	Powertype		Battery	Battery	Battery
1.4	Operation type		Stand on	Stand on	Stand on
1.5	Rated capacity	Q(kg)	1000	1000	1000
1.6	Load center	C(mm)	500	500	500
1.7	Front overhang	x(mm)	100	100	100
1.8	Wheelbase	y(mm)	1050	1050	1050
Weight					
2.1	Service weight(incl. battery)	kg	1680	1760	1790
2.2	Axle capacity with no load, drive side/load side	kg	941/739	986/774	1002/788
2.3	Axle capacity with full load, drive side/load side	kg	367/2313	378/2382	382/2408
Wheel					
3.1	Wheel type		PU	PU	PU
3.2	Load wheel	mm	φ180x100	φ180x100	φ180x100
3.3	Drive wheel	mm	φ230x75	φ230x75	φ230x75
3.4	Number of wheels, front/rear(x=drive wheel)		2/1x+2	2/1x+2	2/1x+2
3.5	Wheel tread, load side	b11(mm)	894	894	894
Size					
4.1	Mast closed height	h1(mm)	2090	1760	2010
4.2	Free lift height	h2(mm)	/	/	/
4.3	Lift height	h3(mm)	1600	2500	3000
4.4	Mast extended height with load-backrest	h4(mm)	2500	3400	3900
4.5	Overall length	L1(mm)	2560	2560	2560
4.6	Overall width	b1/b2(mm)	994	994	994
4.7	Fork size	l/e/s(mm)	1070/100/35	1070/100/35	1070/100/35
4.8	Fork carriage width	b3(mm)	/	/	/
4.9	Fork outside width	b5(mm)	220-610	220-610	220-610
4.10	Inner leg width	b4(mm)	/	/	/
4.11	Handle height	(mm)	1100/1390	1100/1390	1100/1390
4.13	Mast ground clearance	(mm)	66	66	66
4.14	Aisle width for pallet 1000*1200mm,pedal off	Ast(mm)	2770	2770	2770
4.15	Aisle width for pallet 800*1200mm,pedal off	Ast(mm)	2880	2880	2880
4.16	Turning radius	Wa(mm)	1415	1415	1415
Function					
5.1	Driving speed(load/unload)	km/h	4/5.8	4/5.8	4/5.8
5.2	Lifting speed(load/unload)	mm/s	80/110	80/110	80/110
5.3	Lowering speed(load/unload)	mm/s	120/140	120/140	120/140
5.4	Max. gradeability(load/unload)(S2-5min)	%(tanθ)	5/8	5/8	5/8
5.5	Brake type		Electromagnetic	Electromagnetic	Electromagnetic
Drive					
6.1	Driving motor(S2-60min)	kw	1.5	1.5	1.5
6.2	Lifting motor(S3-15%)	kw	2	2	2
6.3	Battery voltage/capacity	V/Ah	24/210	24/210	24/210
6.4	Battery weight	kg	200	200	200
6.5	Steering system		EPS	EPS	EPS
6.6	Side shift option		Not Available	Not Available	Not Available
6.7	Tilt shift option		Available	Available	Available
6.8	Flip down ride on platform option		Available	Available	Available

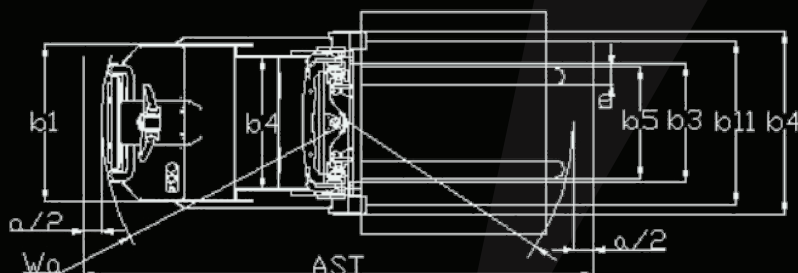
PF10 Product Specification



Suitable for open and closed pallets



IP65 waterproof 3 pin plug type charger included





www.kelvinengineering.co.uk

Kelvin Engineering Ltd.
Field View Business Centre, Surrey,
Newchapel Rd, Lingfield RH7 6LE

Telephone:
Sales, Service & Head Office: 01342 832101